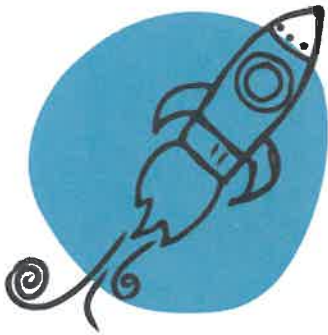


**CHAMPIONS.**

**EXPLORE.  
PLAY.  
LEARN.**



**Give your child a creative space to discover what they love, be original, and build friendships!**

Are you craving some community and normalcy now that school is back in session? Our programs for kids in grades K–6 are here for you! We partner with local schools to complement the learning they offer with our own robust curriculum for elementary schoolers. Plus, kids get extra time in the school day to connect and laugh with friends their age!

Find your back-to-school groove. Our programs take extra-special care of hearts and minds, and give kids a safe space to do what they do best—be kids!

### **Session**

### **DATES & HOURS**

### **PRICING**

Before School

(8/14/23 – 5/31/24) 6:00 AM – 8:15 AM

PT: \$39 / FT: \$59 per week

After School

(8/14/23 – 5/31/24) 2:30 PM – 6:00 PM

PT: \$64 / FT: \$127 per week

Wednesday: 1:20 PM – 6:00 PM

**Thanksgiving Break / Winter Break / Spring Break Full-Day Care Available at Mark Twain, Tomas Rivera and Castle View Elementary**

**For More Information Visit Our Website: [www.discoverchampions.com](http://www.discoverchampions.com)**

**Registration Fee: \$50**

**We Accept Subsidized Pay**

**CALL OR EMAIL US FOR  
MORE INFORMATION,  
OR TO SCHEDULE A  
TOUR TODAY!**

Director: Delia Rodriguez

Phone Number: (951) 312-4094

Customer Care: (800) 246-2154

Email: [CH001525@discoverchampions.com](mailto:CH001525@discoverchampions.com)

Location: Taft Elementary